

062638

RECEIVED
LARAMIE COUNTY
CHEYENNE, WY.

North 1/4 corner Section 29 T18N R65W
CERTIFIED LAND CORNER RECORDATION

'89 OCT 5 PM 3 01

DESCRIPTION OF CORNER EVIDENCE FOUND, AND ORIGINAL RECORD (If known)

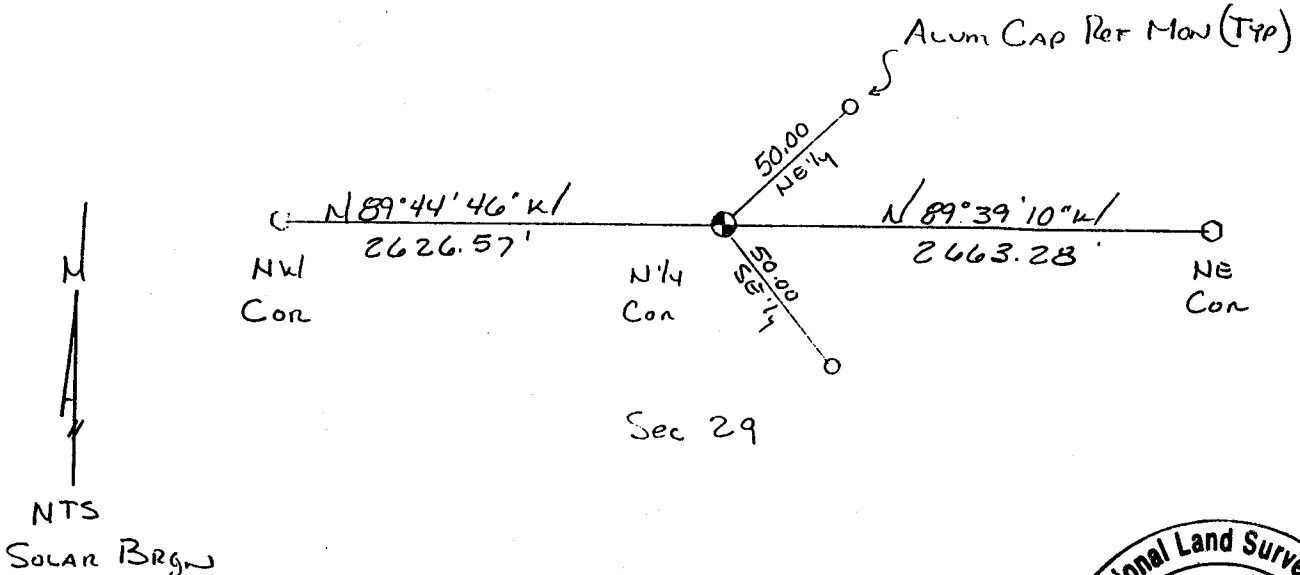
Found the original stone with 1/4 chisled in it. The original call was for a 18x10x3 Limestone. Accepted the stone found as the corner.

DESCRIPTION OF MONUMENT AND ACCESSORIES ESTABLISHED TO PERPETUATE THE ORIGINAL LOCATION OF THIS CORNER:

Set a 30" long rebar with a Corps of Engineers Brass Cap in place of the found stone. Set the stone along side and raise a mound of stone. Tied as shown in the sketch to a No4 rebar with Alum cap REF MON.

AUG 25 1989

SKETCH, WITH COURSE AND DISTANCE TO ADJACENT CORNER IF DETERMINED IN THIS SURVEY.
(May Sketch or Paste Reproduction on Reverse Side.)



I, Wallace C. Muscott certify that I have carefully performed or reviewed the work done on the diagrammed corner as reported on this recordation form and approve the same.

Wallace C. Muscott
Signature of Surveyor

3830
Registration No.

STATE OF WYOMING,
Office of Clerk and Recorder,
County of _____

This "corner record" was filed for record on the _____ day of _____, 19____, was noted on the cross-index plat and is assigned page No. _____, in book No. _____.

County Official			
Cross Index No. <u>R 7</u>	T. <u>18 N</u>	R. <u>65W</u>	<u>6th</u> Mer.
_____	T. _____	R. _____	Mer.
_____	T. _____	R. _____	Mer.
_____	T. _____	R. _____	Mer.
_____	T. _____	R. _____	Mer.
_____	T. _____	R. _____	Mer.
_____	T. _____	R. _____	Mer.